



2 Pathways to Protection

Pathways to Protection (P2P) is a five-year initiative designed to strengthen protection services and systems for people on the move along key migration routes. The P2P Consortium brings together the expertise of the **Danish Refugee Council**, the **Danish Red Cross**, the **International Detention Coalition** and over **23 local partners** across **10 countries**.

The P2P Programme will contribute to an overall enhanced protection environment for people on the move by facilitating access to effective protection services and systems and more accurate information through localisation-centred and adaptative interventions. P2P operationalises a route-based approach anchored in a commitment to a continuum of care for people on the move regardless of their migratory status or intentions. P2P adopts a rights and needs based approach by providing evidence-based information, protection, safety, and dignity to people on the move facilitating informed decision making throughout their migratory journey without encouraging or discouraging migration.

● 10 countries of implementation: **Mali, Niger, Senegal, Morocco, Tunisia, Libya, Egypt, Chad, Sudan and Türkiye**

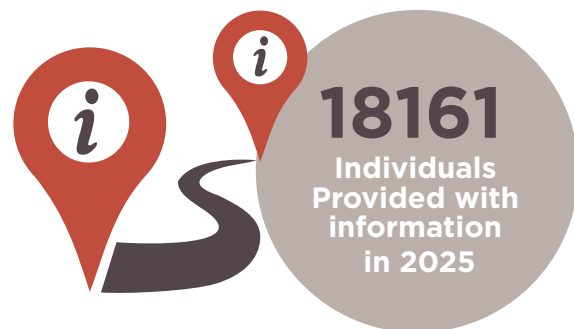


Outcome 1.

People on the move - or those considering to move - have improved access to reliable information before and during their journey, enabling them to make better informed decisions, including on alternatives to irregular migration.

P2P uses different sources for regular and systematic data collection and analysis to provide migrants with updated, tailored and context-specific information.

In 2025, the **Mixed Migration Centre** gathered continuous insights through its 4Mi initiative, capturing migrant profiles, decision-making processes, protection risks, and information gaps. 4320 face-to-face 4Mi interviews were conducted across Morocco, Niger, Sudan, Egypt and Türkiye to inform tailored messaging. In parallel, the Danish Refugee Council has strengthened its protection monitoring across Mali, Niger, Türkiye, Chad and North Africa to track evolving protection risks and needs. The Red Cross & Red Crescent



also paved the way for the RCRC Migration Lab research to assess the impact of reliable information on migrant decisions.

Information package design and information sharing activities have started across Libya, Mali, Niger, Morocco, and Senegal, to deliver tailored messages to migrants along key routes through face-to-face outreach and hotlines. 5 diaspora-led organisations representing the Syrian, Afghan, Sudanese and Senegalese diasporas have also been selected to play a key role in delivering trusted, culturally relevant information on protection risks, rights, and available services.

Key target

More than

100000

people provided information services, enabling them to make better informed decisions by 2029

Outcome 2.

People on the move access protection systems and services as well as livelihood opportunities in a timely and rights-based manner where they are, thereby placing them in a stronger position to take decisions about their short-, medium- and long-term futures.

The P2P Programme aims to contribute to an overall enhanced protection environment for people on the move by facilitating access to effective protection services and systems and by adopting a rights and needs based approach.

Since 2025, the programme operates through a combination of fixed and mobile service delivery modalities along key migration routes. Humanitarian Service Points, run by National Societies of the RCRC Movement, provide consistent support in Niger, Mali, Egypt, and Sudan. Mobile protection teams and community volunteers from the Refugee Council and RCRC engage migrants directly, reaching remote and high-risk areas. The programme also strengthens local and community-led protection systems and uses referral pathways within a comprehensive network of integrated services. In addition, cross-border case management will be piloted between countries to ensure continuity of protection across countries.

Mali

In Mali, the Red Cross, Refugee Council, ENDA and IRAD are now ready to share information at bus stations and at Transit and Orientation Centres, including new partnerships in Gao, Bamako, and Kayes, and outreach at key gathering points in Sikasso, Mopti, and Timbuktu.

17963

Protection Services Provided in 2025

The programme delivers a wide range of protection services:

- **Individual case management** in Libya, Mali, and Niger.
- **Psychosocial support** across Chad, Egypt, Libya, Mali, Morocco, Niger, Senegal, Sudan, and Tunisia.
- **Family reunification support** in Egypt, Mali, Niger, Sudan, and Libya.
- **Legal aid along migration routes** in Chad, Libya, Mali, Morocco, Niger, Senegal, Tunisia, Türkiye, and Sudan.
- **Basic and emergency assistance**—including food, shelter, cash, and NFIs—delivered through HSPs and mobile teams.
- **Expanded livelihood referrals;** access to technical and vocational training, business grants, and in-kind support to MSMEs, in Mali, Niger, Senegal and North Africa.

Key targets

220000

protection services to address people's needs and reduce protection risks

14362

individuals supported through Family Links Restoration services

1610

persons connected to safe and viable livelihood opportunities

Türkiye

In Türkiye the Danish Refugee Council (DRC) partners with Refugee Rights Türkiye (RRT) to provide legal counselling, information, and advice to refugees, asylum seekers and migrants. RRT supports individuals with inquiries on asylum procedures, protection rights, and access to essential services such as education and healthcare. This comprehensive approach helps people navigate Türkiye's complex legal landscape, strengthen their understanding of their rights, and avoid resorting to risky or irregular migration routes or harmful coping mechanisms.



The P2P program has developed a Minimum Service Package to operationalize a route-based approach throughout its service points as the foundation to guarantee a continuum of care. The P2P Minimum Service Package aims to guarantee that people on the move will find predictable minimum services regardless of the sectorial expertise of each partner. The P2P Minimum Service Package includes Information Provision, Psychological First Aid, First Aid and Safe Referrals and Linking/Signposting.

Outcome 3.

Social cohesion and inclusion along the migratory routes are strengthened, thereby creating a stronger protection space and foundation for the attainment of all durable solutions.

Through data driven advocacy, peer-to-peer learning with authorities, community-level engagement and humanitarian diplomacy, the P2P programme aims to reinforce national and local capacities, promote rights-based approaches, and support cooperation across borders and regions.

The programme convened its first P2P Advocacy Working Group in October 2025, which defined a shared advocacy objective focused on “improving safety, dignity, protection and ac-

cess to fundamental rights along the P2P migration routes.” This objective provides a common framework for collective advocacy and policy engagement across countries and regions.

To operationalise these objectives IDC leads peer learning sessions with more than 25 national and local authorities across the route (including key countries in West Africa, North Africa, Southern Europe and Türkiye) focusing on rights-based migration governance, alternatives to detention, and safe and dignified migration pathways.

IDC and MMC support advocacy efforts by equipping stakeholders with data and tools and engaging in over 50 key global and regional fora, including the GFMD, GRF, IMRF, and UN Migration Network, to amplify field-based evidence and promote protective, rights-based policies.

Key targets

109

governmental entities equipped and strengthened to promote protection, inclusion, and durable solutions for people on the move

384

social cohesion & inclusion workshops, dialogues and cultural exchanges to foster safe coexistence and protection

18

reports, briefs, or data sets to equip stakeholders with data and advocacy tools to promote protection, durable solutions and regular pathways to migration

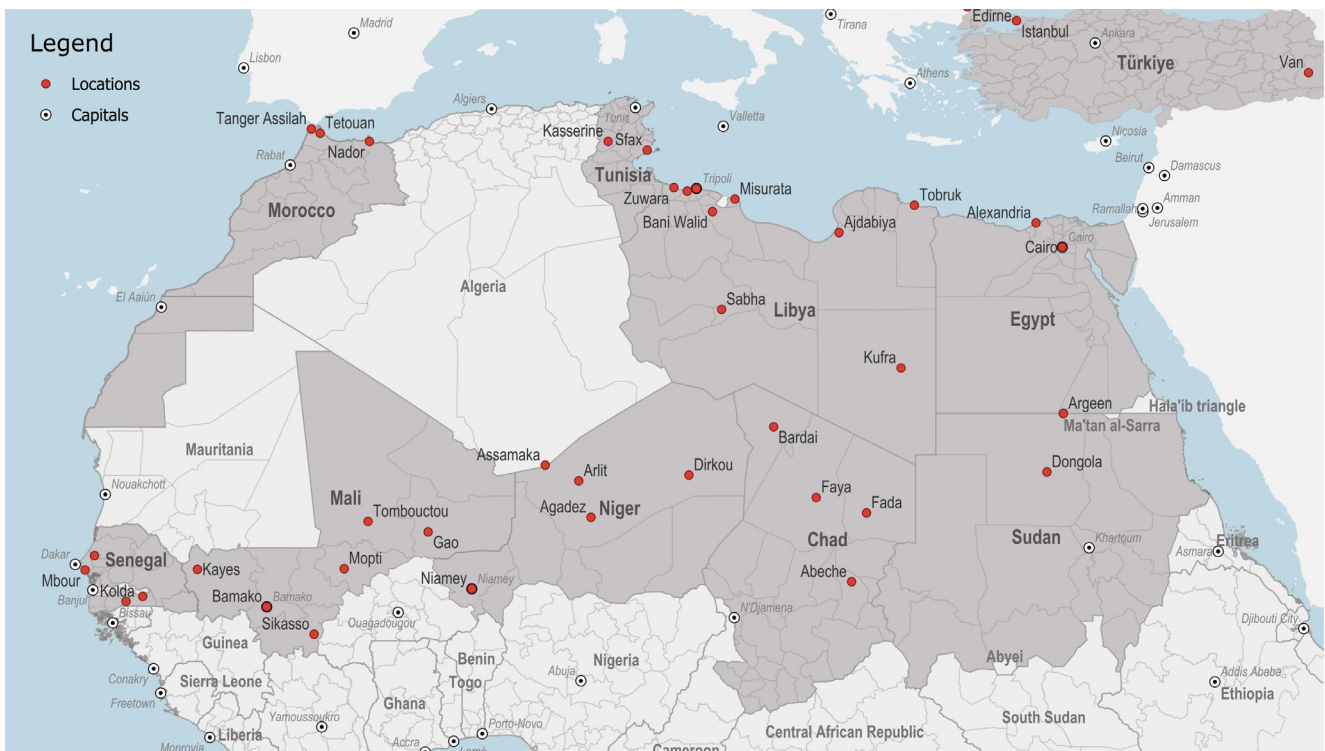


Return and (Re)integration: P2P neither encourages nor discourages migration. Partner teams across the 10 countries of implementation prioritize providing migrants and refugees with necessary information to make informed decisions about their ongoing or future migration, including the choice to seek assistance to return to their country of origin or to integrate in their current location. P2P supports voluntary, informed, and dignified returns by ensuring that individuals who choose to return have reliable information on their rights, their basic needs are met, and are able to access mental health and psychological support if needed. Partner teams in countries of origin provide protection assistance for returnees including psychosocial support and legal aid or direct livelihood assistance to facilitate reintegration.

P2P's approach has embedded sustainability and localization from the outset through equitable partnership. The programme has strengthened inclusive governance and consultation mechanisms and initiated a systematized approach to locally driven capacity strengthening, referral pathways, and advocacy leadership transfer. 23 national partners have already joined the P2P, implementing 50% of the total project budget. They form a Local Partner Advisory group to support monitoring, provide recommendations and elect two representatives who sit on the P2P's Steering Committee, ensuring shared ownership of the project.



Pathways to protection - Intervention Locations (ALL Partners)



This project is implemented in partnership with the following local and national organizations: Arab Institute for Human Rights (AIHR); Libyan Peace Organisation (LPO); Libyan Red Crescent (LRC); Refugee Rights Türkiye (RRT); Afghanistan Studies & Cooperation Center e.V. (ASCC); Asylum Seekers and Refugees Solidarity Association (ARSA); Rouya; Egyptian Red Crescent (ERC); Sudanese Red Crescent Society (SRCS); Cellule de liaison et d'Informations des associations féminines (CELI AF); Sudan Volunteer Organization (SVO); Jeunesse - Enfance - Migration - Développement (JMED); The Red Cross Society of Niger (NRC); Environnement et Développement du Tiers-Monde (ENDA - Mali); Initiative Recherche Appui au Développement (IRAD); Mali Red Cross (MRC); CARITAS; Environnement et Développement du Tiers-Monde (ENDA - Senegal); Délégation Diocésaine des Migrations (DDM); and the Association des Ressortissants Sénégalais Résidant au Maroc (ARSEREM).

Opportunities for Scaling

The P2P programme is designed for scalability and replication in existing or new countries along main migration routes into Europe. For any further information please contact the P2P Chief of party: andrew.meratt@drc.ngo